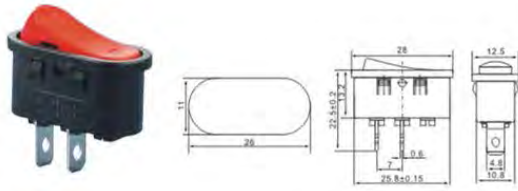


Rating A-TOP1: 10A 125VAC ; 6A 250VAC / A-TOP3: 20A 125VAC ; 15A 250VAC  
 Contact Resistance: 35m Ω max  
 Insulation Resistance: 500VDC 100M Ω min

Dielectric Strength: 1500VAC, 1 Minute  
 Operating Temperature: -25°C~ +85°C  
 Electrical Life: ≥ 10,000 Cycles

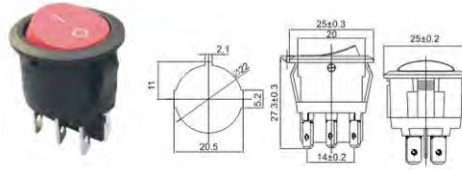


## A-TOP1-10-101/102



A-TOP1-10-101 ON-OFF  
 A-TOP1-10-102 ON-ON

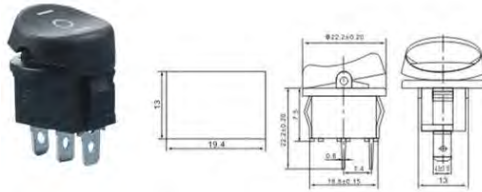
## A-TOP1-5-202/203



A-TOP1-5-202 ON-ON  
 A-TOP1-5-203 ON-OFF-ON

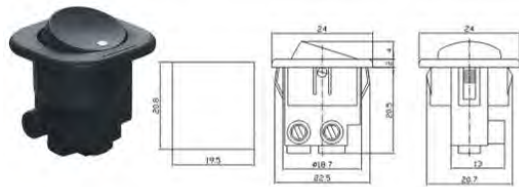
14  
\*  
15

## A-TOP1-11-101/103



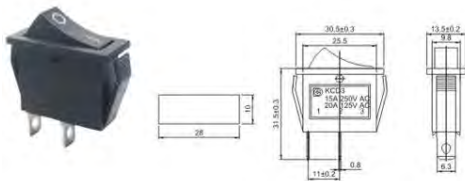
A-TOP1-11-101 ON-OFF  
 A-TOP1-11-103 ON-OFF-ON

## A-TOP1-7-101



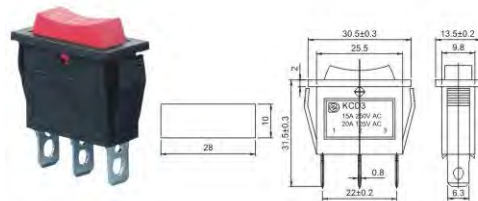
A-TOP1-7-101 ON-OFF

## A-TOP3-101/111



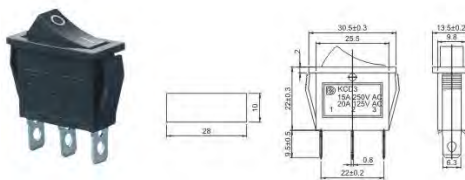
A-TOP3-101 ON-OFF  
 A-TOP3-111 OFF-(ON)

## A-TOP3-103



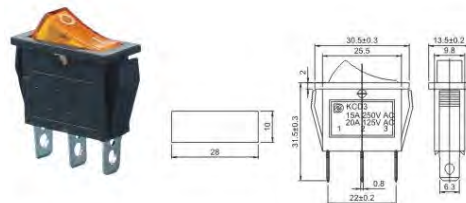
A-TOP3-103 ON-OFF-ON

## A-TOP3-102



A-TOP3-102 ON-ON

## A-TOP3-101N



A-TOP3-101N ON-OFF

